

## PCSFDV\_DN\_2\_C\_2 - Valvola di intercettazione a sfera a due vie - 3 pezzi

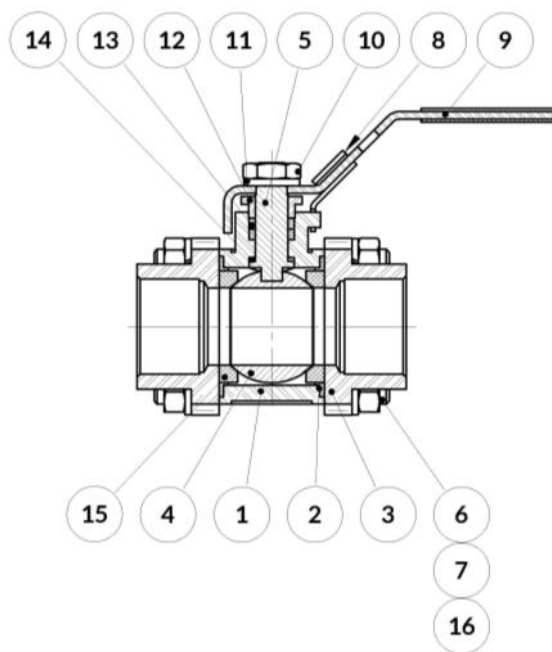
### PCSFDV\_DN\_2\_C\_2 - 2 way - 3 piece ball valve



<sup>(1)</sup> Disponibilità variabile per tipologia di articolo (vedere schede dimensionali)

<sup>(1)</sup> Availability according to item type (see dimensional tables)

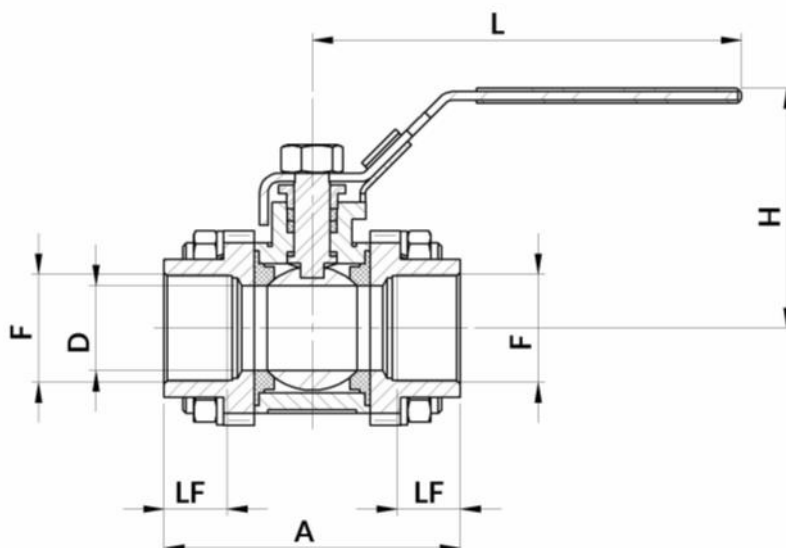
Diametro nominale DN <sup>(1)</sup>	Nominal diameter DN <sup>(1)</sup>	DN8, DN10, DN15, DN20, DN25, DN32, DN40, DN50, DN65, DN80, DN100
Pressione nominale	Nominal pressure	69 bar
Temperatura fluido	Fluid temperature	-20 ÷ +200 °C
Connessioni corpo	Body ends	C=1 - FF - ISO 228 G C=2 - Saldare di tasca - Socket weld C=3 - Saldare di testa - Buttweld
Passaggio	Bore	Pieno - full



R – Ricambi consigliati - Recommended spares

POS	QT	Descrizione Description	Materiale Material	KIT Ric. Spare KIT
1	1	Corpo valvola Valve body	CF8M	
2	2	Guarnizione corpo Body seal	PTFE	R
3	2	Flangia Flange	CF8M	
4	1	Sfera Ball	AISI 316	
5	1	Stelo Stem	AISI 316	
6	8	Dado Nut	A2/70	
7	8	Rondella Grower Spring washer	A2/70	
8	1	Piastrina blocca-maniglia Locking device	AISI304	
9	1	Maniglia Handle	AISI 304	
10	1	Dado Nut	A2/70	
11	1	Rondella Grower Spring washer	A2/70	
12	1	Ghiera Ring nut	AISI 316	
13	2	Guarnizione stelo Packing gland	PTFE	R
14	1	Pattino Sliding ring	PTFE	R
15	2	Guarnizione sfera Ball seal	PTFE	R
16	4	Tirante Tightening rod	A2/70	

DATI DIMENSIONALI	DIMENSIONAL DATA
PCSF DV_DN_2_1_2 - CONNESSIONI FILETTATE FF GAS ISO228	PCSF DV_DN_2_1_2 - GAS ISO228 FEMALE THREAD ENDS



**TABELLA DIMENSIONALE SERIE PCSFDV\_DN\_2\_1\_2 <sup>(1)</sup>**  
**PCSF DV\_DN\_2\_1\_2 SERIES DIMENSIONAL TABLE <sup>(1)</sup>**

DN		A±2	D	F	LF	H	L
(mm)	(inch)						
8	1/4"	70	10	1/4" - 19	12	50	85
10	3/8"	75	12	3/8" - 19	14	55	105
15	1/2"	70	15	1/2" - 14	15	55	105
20	3/4"	78	20	3/4" - 14	15	65	110
25	1"	88	25	1" - 11	18	70	125
32	1 1/4"	93	32	1 1/4" - 11	19	80	160
40	1 1/2"	105	38	1 1/2" - 11	19	80	160
50	2"	135	50	2" - 11	23	95	160
65	2 1/2"	185	65	2 1/2" - 11	30	130	235
80	3"	210	80	3" - 11	32	140	245
100	4"	260	100	4" - 11	35	175	280

<sup>(1)</sup> : I dati dimensionali riportati sono indicativi e possono essere variati dal fornitore senza obbligo di preavviso

<sup>(1)</sup> : Dimensional data are indicated only for reference and may be changed by supplier without notice

PCSFDV\_DN\_2\_2\_2 - CONNESSIONI A SILDARE DI TASCA

PCSFDV\_DN\_2\_3\_2 - CONNESSIONI A SILDARE DI TESTA

PCSFDV\_DN\_2\_2\_2 - SOCKET WELD ENDS

PCSFDV\_DN\_2\_3\_2 - BUTTWELD ENDS

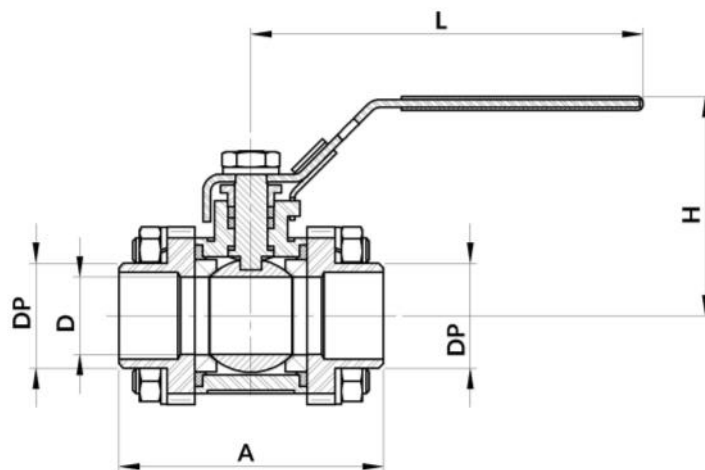
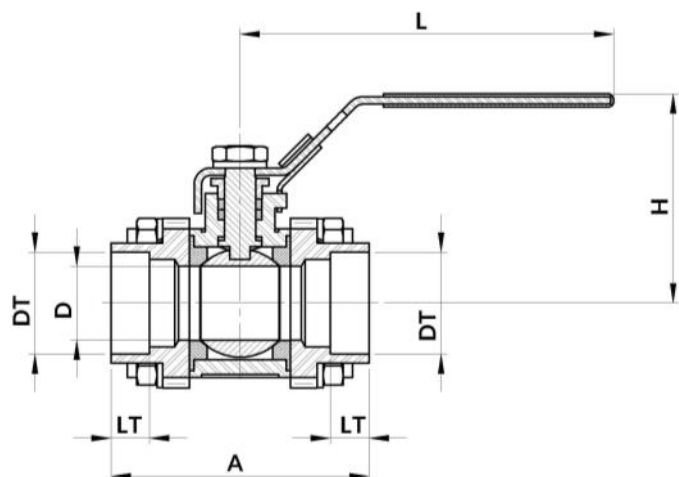


TABELLA DIMENSIONALE SERIE

PCSFDV\_DN\_2\_2\_2<sup>(1)</sup>

PCSFDV\_DN\_2\_2\_2 SERIES DIMENSIONAL TABLE<sup>(1)</sup>

DN		A±2	D	DT	LT	H	L
(mm)	(inch)						
8	1/4"	58	10	14.2	14	55	90
10	3/8"	70	12	17.8	10	55	85
15	1/2"	65	15	21.2	10	60	90
20	3/4"	79	20	27.2	13	65	110
25	1"	81	25	34	13	70	125
32	1 1/4"	110	32	42.5	13	90	140
40	1 1/2"	120	38	49	13	90	150
50	2"	130	50	61	16	100	160
65	2 1/2"	180	65	76.5	18	130	230
80	3"	200	80	89.5	24	140	230

TABELLA DIMENSIONALE SERIE

PCSFDV\_DN\_2\_3\_2<sup>(1)</sup>

PCSFDV\_DN\_2\_3\_2 SERIES DIMENSIONAL TABLE<sup>(1)</sup>

DN		A±2	D	DP	H	L
(mm)	(inch)					
8	1/4"	72	10	23	60	85
15	1/2"	72	15	23	65	100
20	3/4"	82	20	28	70	120
25	1"	92	25	33.5	75	125
32	1 1/4"	102	32	43	80	150
40	1 1/2"	102	38	49	85	150
50	2"	130	50	60.5	100	175
65	2 1/2"	165	65	78.5	135	250

<sup>(1)</sup>: I dati dimensionali riportati sono indicativi e possono essere variati dal fornitore senza obbligo di preavviso

<sup>(1)</sup>: Dimensional data are indicated only for reference and may be changed by supplier without notice

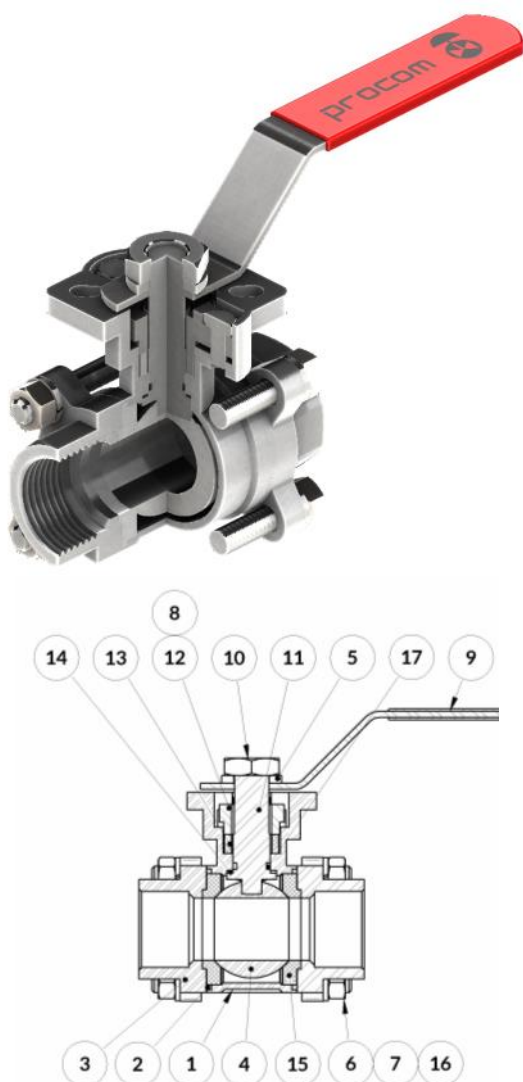
## PCSFDV\_DN\_2\_C\_4 - Valvola di intercettazione a sfera a due vie - 3 pezzi - ISO5211 mounting pad

### PCSFDV\_DN\_2\_C\_4 - ISO5211 mounting pad 2 way - 3 piece ball valve

Diametro nominale DN <sup>(1)</sup>	Nominal diameter DN <sup>(1)</sup>	DN8, DN10, DN15, DN20, DN25, DN32, DN40, DN50, DN65, DN80, DN100
Pressione nominale	Nominal pressure	69 bar
Temperatura fluido	Fluid temperature	-20 ÷ +200 °C
Conessioni corpo	Body ends	C=1 - FF - ISO 228 G C=1N - FF NPT C=2 - Saldare di tasca - Socket weld C=3 - Saldare di testa - Butt weld C=10 - Clamp ISO 2852 <sup>(2)</sup>
Passaggio	Bore	Pieno - full

#### PCSFDV\_DN\_2\_C\_4 - COMANDO A LEVA

#### PCSFDV\_DN\_2\_C\_4 - HANDLE



POS	QT	Descrizione Description	Materiale Material	KIT Ric. Spare KIT
1	1	Corpo valvola Valve body	CF8M	
2	2	Guarnizione corpo Body seal	PTFE	R
3	2	Flangia Flange	CF8M	
4	1	Sfera Ball	AISI 316	
5	1	Stelo Stem	AISI 316	
6	8	Dado Nut	A2/70	
7	8	Rondella Grower Spring washer	A2/70	
8	2	Vite TE Hex screw	A2/70	
9	1	Maniglia Handle	AISI 304	
10	1	Dado Nut	A2/70	
11	1	Rondella Grower Spring washer	A2/70	
12	1	Flangia premistoppa Packing flange	AISI 304	
13	2	Guarnizione stelo Packing gland	PTFE	R
14	1	Pattino Sliding ring	PTFE	R
15	2	Guarnizione sfera Ball seal	PTFE	R
16	4	Tirante Tightening rod	A2/70	
17	1	Guarnizione OR OR gasket	FPM (Viton)	R

<sup>(1)</sup> Disponibilità variabile per tipologia di articolo (vedere schede dimensionali)

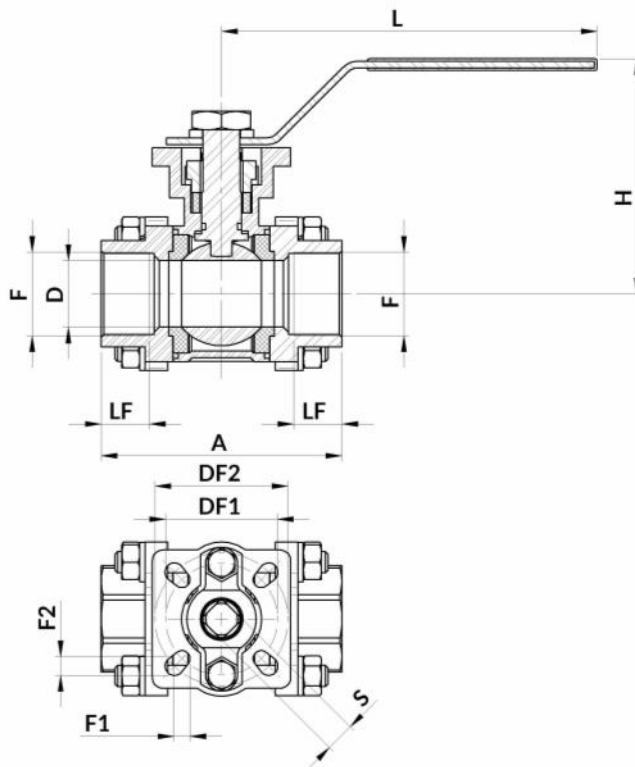
<sup>(1)</sup> Availability according to item type (see dimensional tables)

<sup>(2)</sup> Le valvole con terminali T/C sono nominate PCSFDVY

<sup>(2)</sup> T/C end valves are coded as PCSFDVY

R — Ricambi consigliati - Recommended spares

DATI DIMENSIONALI	DIMENSIONAL DATA
PCSFDV_DN_2_1/1N_4 - CONNESSIONI FILETTATE FF GAS ISO228 / NPT	PCSFDV_DN_2_1/1N_4 - GAS ISO228 / NPT FEMALE THREAD ENDS



**TABELLA DIMENSIONALE SERIE PCSFDV\_DN\_2\_1/1N\_4**  
**PCSFDV\_DN\_2\_1/1N\_4 SERIES DIMENSIONAL TABLE**

DN		A±2	D	F		LF		H	L	F1	DF1	F2	DF2	S
(mm)	(inch)			BSPP	NPT	BSPP	NPT							
8	1/4"	67	12	1/4" - 19	1/4" - 18	14	13	70	120	6	36	6	42	9
10	3/8"	67	12	3/8" - 19	3/8" - 18	15	15	70	130	6	42	7	50	9
15	1/2"	67	15	1/2" - 14	1/2" - 14	15	16	70	130	6	42	7	50	9
20	3/4"	80	20	3/4" - 14	3/4" - 14	17	18	75	130	6	42	7	50	9
25	1"	90	25	1" - 11	1" - 11 1/2	17	18	90	130	6	42	7	50	11
32	1 1/4"	105	32	1 1/4" - 11	1 1/4" - 11 1/2	19	18	90	165	6	42	7	50	11
40	1 1/2"	120	38	1 1/2" - 11	1 1/2" - 11 1/2	23	26	105	190	7	50	9	70	14
50	2"	133	50	2" - 11	2" - 11 1/2	26	26	115	190	8	50	9	70	14
65	2 1/2"	183	64	2 1/2" - 11	2 1/2" - 8	35	32	130	290	9	70	11	102	17
80	3"	205	78	3" - 11	3" - 8	35	32	150	320	9	70	11	102	17
100	4"	210	100	4" - 11	4" - 8	40	35	185	320	9	70	11	102	17

(1): I dati dimensionali riportati sono indicativi e possono essere variati dal fornitore senza obbligo di preavviso

(1): Reported dimensions are only for reference and may be changed by the supplier without notice

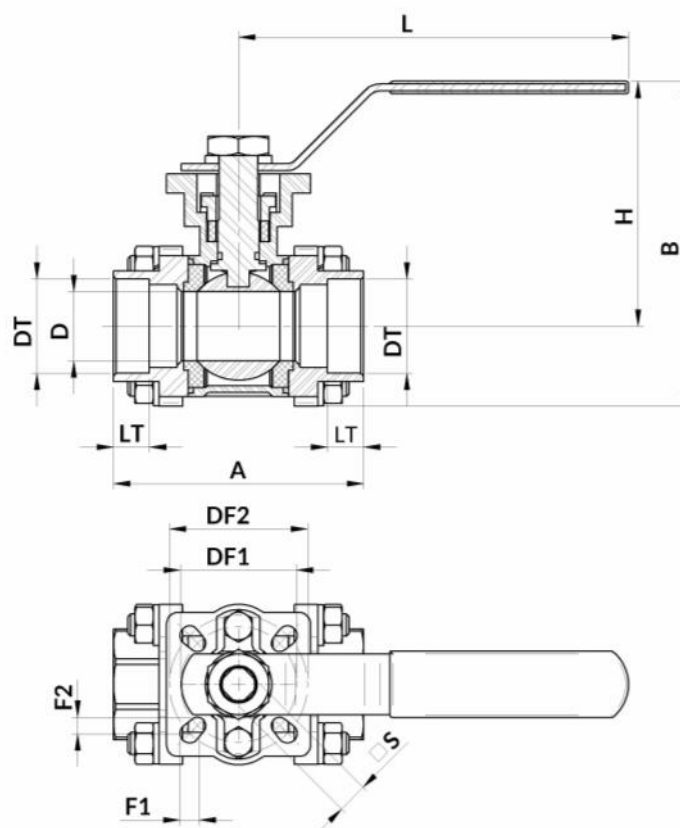


TABELLA DIMENSIONALE SERIE PCSFDV\_DN\_2\_2\_4

PCSFDV\_DN\_2\_2\_4 SERIES DIMENSIONAL TABLE

DN		A±2	D	DT	LT	H	L	F1	DF1	F2	DF2	S
(mm)	(inch)											
8	1/4"	60	10	14.2	10	60	115	6	36	6	42	9
10	3/8"	67	12	17.8	10	70	130	6	42	7	50	9
15	1/2"	67	15	21.2	10	70	130	6	42	7	50	9
20	3/4"	80	20	27.2	12	75	130	6	42	7	50	9
25	1"	90	25	34	12	90	130	6	42	7	50	11
32	1 1/4"	105	32	42.5	12	90	165	6	42	7	50	11
40	1 1/2"	120	38	49	12	105	190	7	50	9	70	14
50	2"	133	50	61	16	115	190	8	50	9	70	14
65	2 1/2"	183	64	76.5	18	130	290	9	70	11	102	17
80	3"	205	78	89.5	23	150	320	9	70	11	102	17

(1): I dati dimensionali riportati sono indicativi e possono essere variati dal fornitore senza obbligo di preavviso

(1): Reported dimensions are only for reference and may be changed by the supplier without notice

PCSF DV_DN_2_3_4 - CONNESSIONI A SALDARE DI TESTA	PCSF DVY_DN_2_10_4 - CONNESSIONI CLAMP ISO 2852
PCSF DV_DN_2_3_4 - BUTTWELD ENDS	PCSF DVY_DN_2_10_4 - ISO2852 CLAMP ENDS

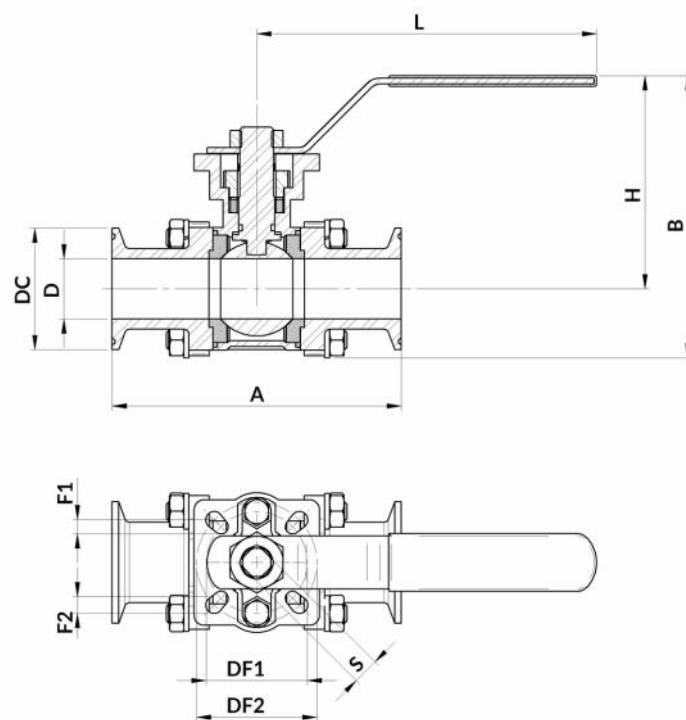
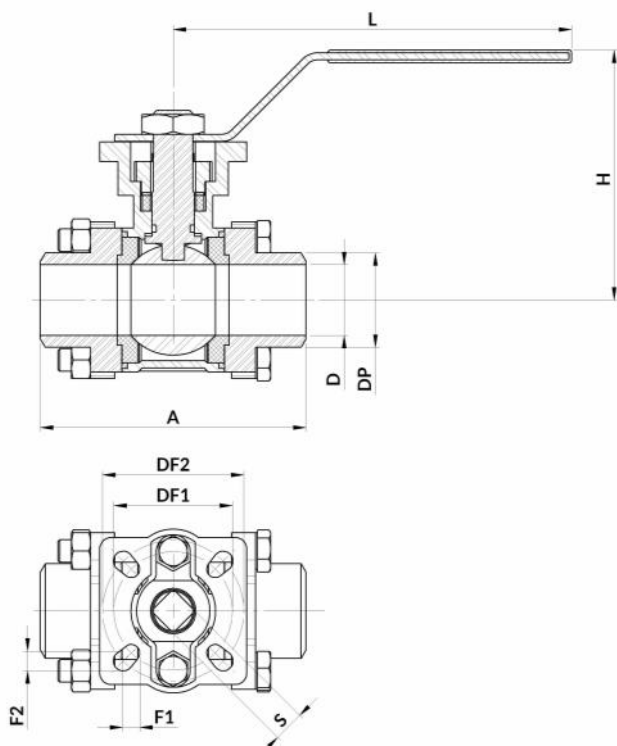


TABELLA DIMENSIONALE <sup>(1)</sup> DIMENSIONAL TABLE <sup>(1)</sup>								PCSFDV_DN_2_3_4				PCSFVDVY_DN_2_10_4				
DN		D	F1	DF1	F2	DF2	S	A±2	DP	H	L	DC	A±2	B	H	L
(mm)	(inch)															
8	1/4"	10	6	36	6	42	9	65	14	60	115					
10	3/8"	12	6	42	7	50	9	65	17.5	70	130					
15	1/2"	15	6	42	7	50	9	70	23	70	130	50.5 <sup>(2)</sup>	70	100	70	120
20	3/4"	20	6	42	7	50	9	73	27.5	75	130	50.5	80	110	70	120
25	1"	25	6	42	7	50	11	95	34	90	130	50.5	90	120	80	150
32	1 1/4"	32	6	42	7	50	11	95	42.5	90	165	50.5	105	140	85	150
40	1 1/2"	38	7	50	9	70	14	110	48.5	105	190	64	120	150	95	180
50	2"	50	8	50	9	70	14	120	61	115	190	77.5	135	165	100	200

(1): I dati dimensionali riportati sono indicativi e possono essere variati dal fornitore senza obbligo di preavviso

(2): Dimensione non standard per connessioni T/C ISO 2852

(1): Reported dimensions are only for reference and may be changed by the supplier without notice

(2): Not standard dimension for ISO2852 T/C connection



**PCSFDV\_DN\_2\_C\_4\_DE - ATTUATORE PNEUMATICO D.E.**

**PCSFDV\_DN\_2\_C\_4\_DE - D.E. PN. ACTUATOR**

Altri attuatori DE disponibili:

- Bxxx;

Per dimensioni d'ingombro e accoppiamenti consigliati con attuatori pneumatici non standard, chiedere in fase d'offerta;

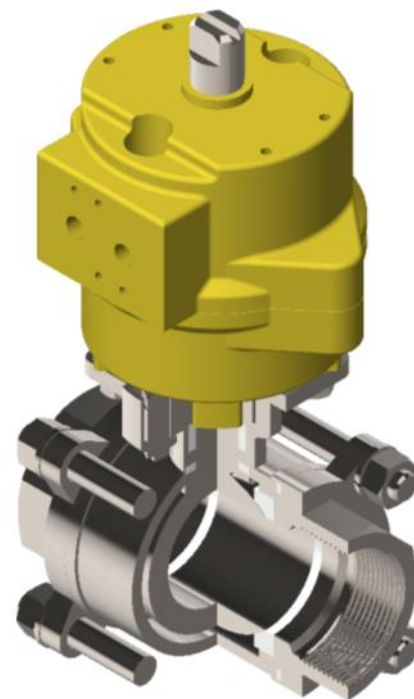
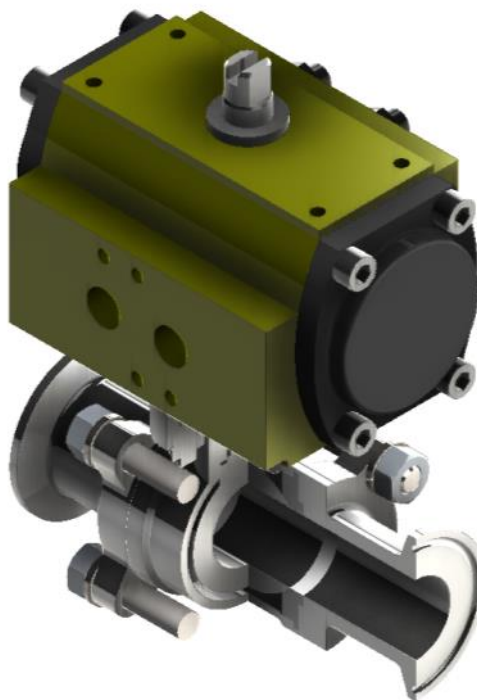
Per maggiori dettagli circa le caratteristiche prestazionali degli attuatori, consultare la sezione dedicata.

Other DE actuators available:

- Bxxx;

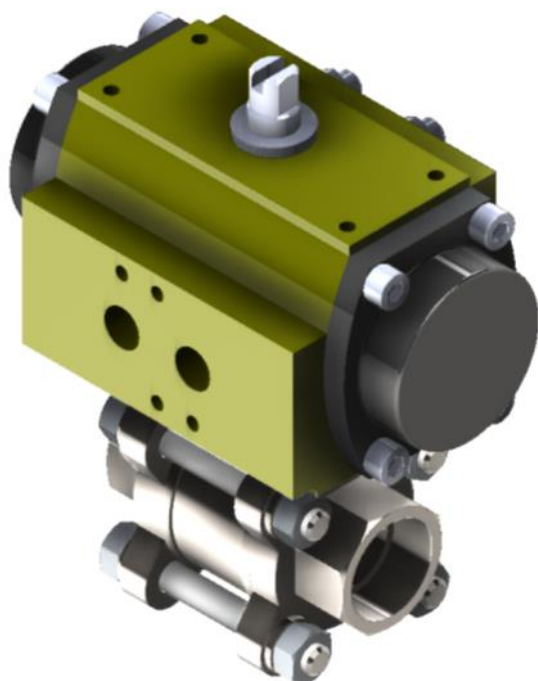
For overall dimensions and recommended couplings with non-standard pneumatic actuators, ask at the offer stage;

For more details about the performance characteristics of the actuators, see the dedicated section.



**PCSFDV\_DN\_2\_C\_4\_SE - Attuatore pneumatico S.E.**  
**PCSFDV\_DN\_2\_C\_4\_SE - Spring return pneumatic actuator**

**PCSFDV\_DN\_2\_C\_4\_EL - Attuatore rotativo elettrico**  
**PCSFDV\_DN\_2\_C\_4\_EL - Rotating electric actuator**

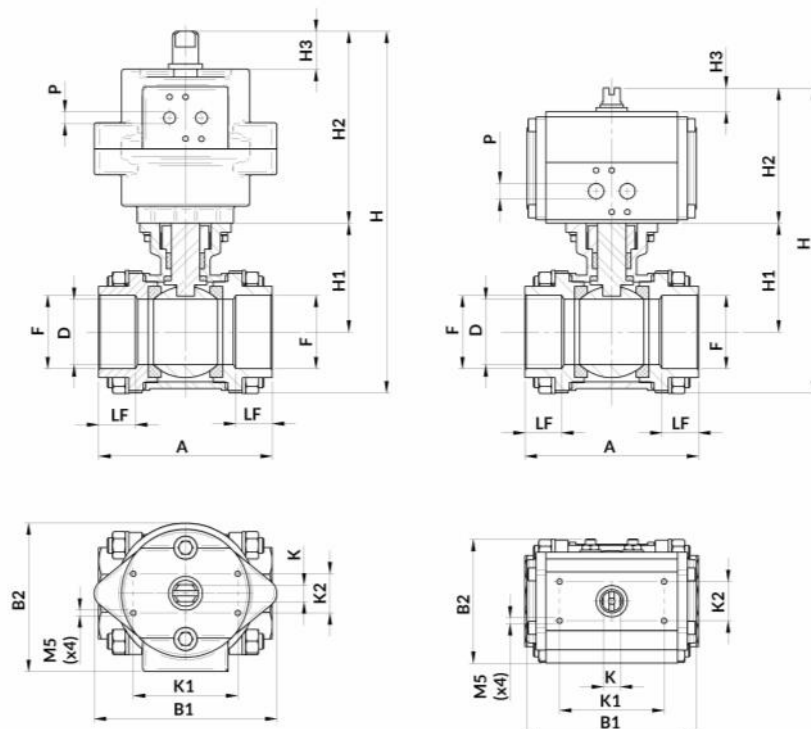




**DATI DIMENSIONALI**
**DIMENSIONAL DATA**

PCSFVDV\_DN\_2\_1/1N\_4\_DE - CONNESSIONI FILETTATE FF GAS  
ISO228 / NPT

PCSFVDV\_DN\_2\_1/1N\_4\_DE - GAS ISO228 / NPT FEMALE THREAD ENDS

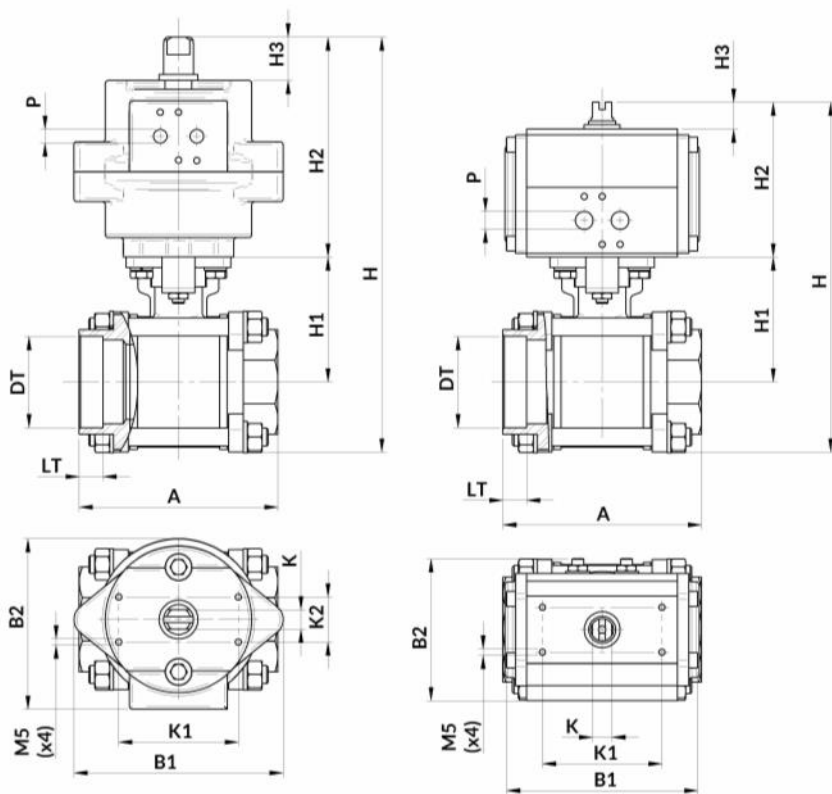


(\*) Accoppiamento attuatore pneumatico/valvola consigliati;  
(1): I dati dimensionali riportati sono indicativi e possono essere variati dal fornitore senza obbligo di preavviso

(\*) Recommended pneumatic actuator / valve coupling  
(1): Reported dimensions are only for reference and may be changed by the supplier without notice

**TABELLA DIMENSIONALE SERIE PCSFDV\_DN\_2\_1/1N\_4\_DE <sup>(1)</sup>**  
**PCSFVDV\_DN\_2\_1/1N\_4\_DE SERIES DIMENSIONAL TABLE <sup>(1)</sup>**

DN		DE <sup>(*)</sup>	A±2	B1	B2	D	F		LF		H	H1	H2	H3	K	K1xK2	P
(mm)	(inch)						BSPP	NPT	BSPP	NPT							
8	1/4"	RD032	60	65	45	10	1/4" - 19	1/4" - 18	14	13	110	35	55	10	7	25.5x25.5	1/8"GC
10	3/8"	RD032	67	65	45	12	3/8" - 19	3/8" - 18	15	15	120	40	55	10	7	25.5x25.5	1/8"GC
15	1/2"	RD040 B0	67	100 110	65 95	15	1/2" - 14	1/2" - 14	15	16	145 205	50	75 135	20 30	9 10	50x25 80x30	1/8"GC 1/4"GC
20	3/4"	RD040 B0	80	100 110	65 95	20	3/4" - 14	3/4" - 14	17	18	150 210	50	75 135	20 30	9 10	50x25 80x30	1/8"GC 1/4"GC
25	1"	RD050 B0	90	120 110	75 95	25	1" - 11	1" - 11 1/2	17	18	175 220	55	90 135	20 30	9 10	80x30	1/4"GC
32	1 1/4"	RD050 B0	105	120 110	75 95	32	1 1/4" - 11	1 1/4" - 11 1/2	19	18	185 230	60	90 135	20 30	9 10	80x30	1/4"GC
40	1 1/2"	RD065 B1	120	130 140	90 120	38	1 1/2" - 11	1 1/2" - 11 1/2	23	26	225 265	75	105 145	20 30	13	80x30	1/4"GC
50	2"	RD065 B1	133	130 140	90 120	49	2" - 11	2" - 11 1/2	26	26	235 275	90	105 145	20 30	13	80x30	1/4"GC
65	2 1/2"	RD080 B2	183	190 170	100 140	65	2 1/2" - 11	2 1/2" - 8	35	32	280 325	100	125 170	20 30	19 13	80x30	1/4"GC
80	3"	RD090 B2	205	190 170	100 140	76	3" - 11	3" - 8	35	32	320 355	110	135 170	20 30	19 13	80x30	1/4"GC
100	4"	RD090 B2	210	190 170	100 140	100	4" - 11	4" - 8	40	35	335 380	130	135 170	20 30	19 13	80x30	1/4"GC

**PCSFDV\_DN\_2\_2\_4\_DE - CONNESSIONI A SALDARE DI TASCA**
**PCSFDV\_DN\_2\_2\_4\_DE - SOCKET WELD ENDS**


(\*) Accoppiamento attuatore pneumatico/valvola consigliati;  
(1): I dati dimensionali riportati sono indicativi e possono essere variati dal fornitore senza obbligo di preavviso

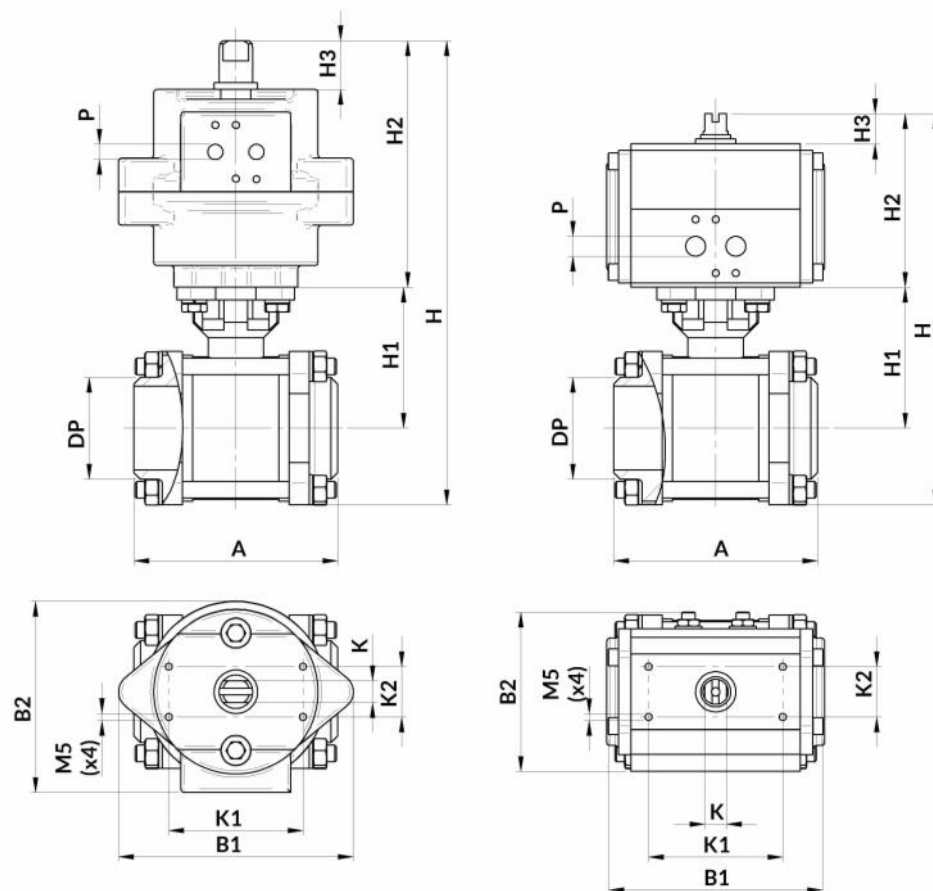
(\*) Recommended pneumatic actuator / valve coupling  
(1): Reported dimensions are only for reference and may be changed by the supplier without notice

**TABELLA DIMENSIONALE SERIE PCSFDV\_DN\_2\_2\_4\_DE <sup>(1)</sup>**
**PCSFDV\_DN\_2\_2\_4\_DE SERIES DIMENSIONAL TABLE <sup>(1)</sup>**

DN	DE <sup>(*)</sup>	A±2	B1	B2	D	DT	LT	H	H1	H2	H3	K	K1xK2	P
(mm) (inch)														
8 1/4"	RD032	65	65	45	10	14.2	10	125	50	55	10	7	25.5x25.5	1/8"GC
10 3/8"	RD032	67	65	45	12	17.8	10	120	40	55	10	7	25.5x25.5	1/8"GC
15 1/2"	RD040	67	100	65 95	15	21.2	10	145 205	50	75	20 30	9 10	50x25 80x30	1/8"GC 1/4"GC
20 3/4"	RD040	80	100	65 95	20	27.2	12	150 210	50	75	20 30	9 10	50x25 80x30	1/8"GC 1/4"GC
25 1"	RD050	90	120	75 95	25	34	12	175 220	55	90	20 30	9 10	80x30	1/4"GC
32 1 1/4"	RD050	105	120	75 95	32	42.5	12	185 230	60	90	20 30	9 10	80x30	1/4"GC
40 1 1/2"	RD065	120	130	90 120	38	49	12	225 265	75	105	20 30	13	80x30	1/4"GC
50 2"	RD065	133	130	90 120	50	61	16	235 275	90	105	20 30	13	80x30	1/4"GC
65 2 1/2"	RD080	183	190	100 140	64	76.5	18	280 325	100	125	20 30	19 13	80x30	1/4"GC
80 3"	RD090	205	190	100 140	78	89.5	23	320 355	110	135	20 30	19 13	80x30	1/4"GC

PCSFDV\_DN\_2\_3\_4\_DE - CONNESSIONI A SALDARE DI TESTA

PCSFDV\_DN\_2\_3\_4\_DE - BUTTWELD ENDS

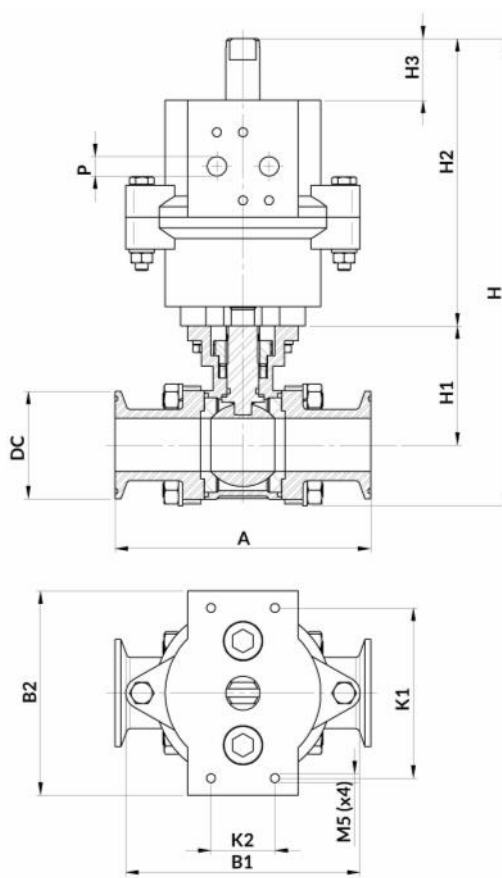
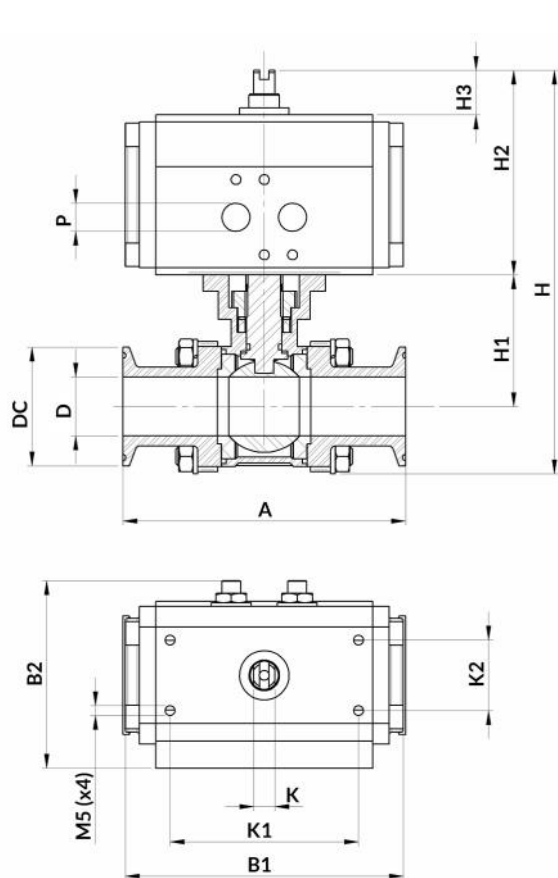


(\*) Accoppiamento attuatore pneumatico/valvola consigliati;  
 (1): I dati dimensionali riportati sono indicativi e possono essere variati dal fornitore senza obbligo di preavviso

(\*) Recommended pneumatic actuator / valve coupling  
 (1): Reported dimensions are only for reference and may be changed by the supplier without notice

**TABELLA DIMENSIONALE SERIE PCSFDV\_DN\_2\_3\_4\_DE <sup>(1)</sup>**  
**PCSFDV\_DN\_2\_3\_4\_DE SERIES DIMENSIONAL TABLE <sup>(1)</sup>**

DN	DE (*)	A±2	B1	B2	D	DP	H	H1	H2	H3	K	K1xK2	P
(mm) (inch)													
8 1/4"	RD032	65	65	45	10	14	115	37	55	10	7	25.5x25.5	1/8"GC
10 3/8"	RD032	65	65	45	12	17.5	115	37	55	10	7	25.5x25.5	1/8"GC
15 1/2"	RD040 B0	70	100 110	65 95	15	23	137 197	40	75 135	20 30	9 10	50x25 80x30	1/8"GC 1/4"GC
20 3/4"	RD040 B0	73	100 110	65 95	20	27.5	145 205	45	75 135	20 30	9 10	50x25 80x30	1/8"GC 1/4"GC
25 1"	RD050 B0	95	120 110	75 95	25	34	175 220	55	90 135	20 30	9 10	80x30	1/4"GC
32 1 1/4"	RD050 B0	95	120 110	75 95	32	42.5	180 225	60	90 135	20 30	9 10	80x30	1/4"GC
40 1 1/2"	RD065 B1	110	130 140	90 120	38	48.5	220 260	75	105 145	20 30	13	80x30	1/4"GC
50 2"	RD065 B1	120	130 140	90 120	50	61	235 275	85	105 145	20 30	13	80x30	1/4"GC



(\*) Accoppiamento attuatore pneumatico/valvola consigliati;  
(1): I dati dimensionali riportati sono indicativi e possono essere variati dal fornitore senza obbligo di preavviso  
(2): Dimensione non standard per connessioni T/C ISO 2852

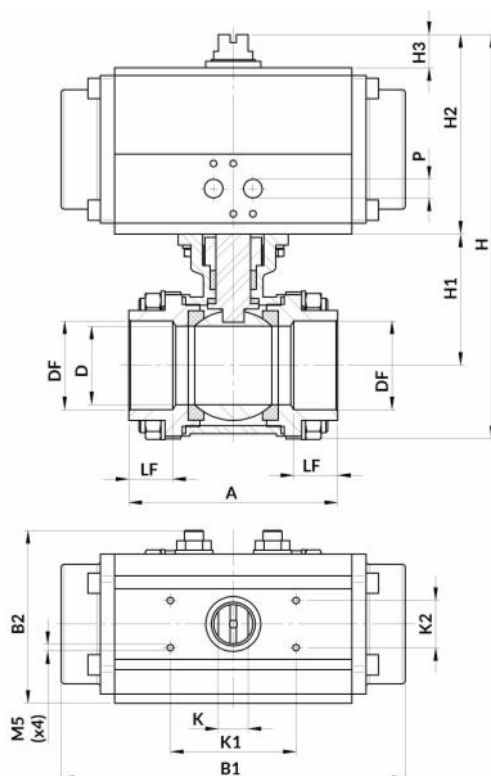
(\*) Recommended pneumatic actuator / valve coupling  
(1): Reported dimensions are only for reference and may be changed by the supplier without notice  
(2): Not standard dimension for ISO2852 T/C connection

**TABELLA DIMENSIONALE SERIE PCSFVDVY\_DN\_2\_10\_4\_DE <sup>(1)</sup>**  
**PCSFVDVY\_DN\_2\_10\_4\_DE SERIES DIMENSIONAL TABLE <sup>(1)</sup>**

DN		DE <sup>(*)</sup>	A±2	B1	B2	DC	H	H1	H2	H3	K	K1xK2	P
(mm)	(inch)												
15	1/2"	RD040 B0	70	100 110	65 95	50.5 <sup>(2)</sup>	130 190	40	75 135	20 30	9 10	50x25 80x30	1/8"GC 1/4"GC
20	3/4"	RD040 B0	80	100 110	65 95	50.5	140 200	45	75 135	20 30	9 10	50x25 80x30	1/8"GC 1/4"GC
25	1"	RD050 B0	90	120 110	75 95	50.5	170 215	55	90 135	20 30	9 10	80x30	1/4"GC
32	1 1/4"	RD050 B0	105	120 110	75 95	50.5	180 225	60	90 135	20 30	9 10	80x30	1/4"GC
40	1 1/2"	RD065 B1	120	130 140	90 120	64	215 255	70	105 145	20 30	13	80x30	1/4"GC
50	2"	RD065 B1	135	130 140	90 120	77.5	225 265	80	105 145	20 30	13	80x30	1/4"GC

PCSFDV\_DN\_2\_1/1N\_4\_SE - CONNESSIONI FILETTATE FF GAS  
ISO228 / NPT

PCSFDV\_DN\_2\_1/1N\_4\_SE - GAS ISO228 / NPT FEMALE THREAD ENDS

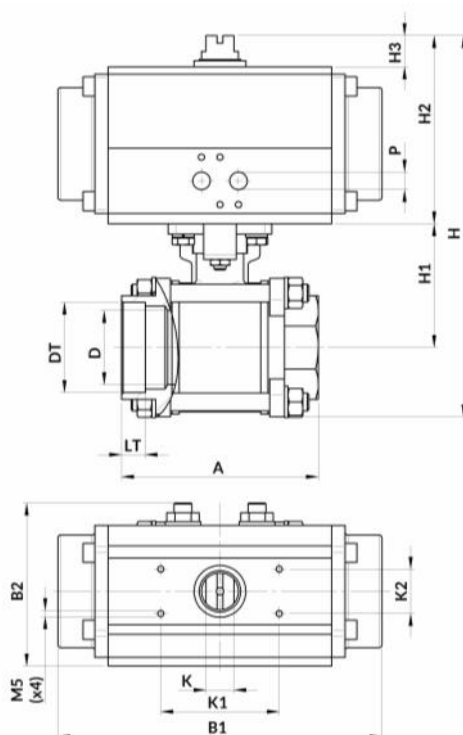


(\*) Accoppiamento attuatore pneumatico/valvola consigliati;  
(1): I dati dimensionali riportati sono indicativi e possono essere variati dal fornitore senza obbligo di preavviso

(\*) Recommended pneumatic actuator / valve coupling  
(1): Reported dimensions are only for reference and may be changed by the supplier without notice

TABELLA DIMENSIONALE SERIE PCSFDV\_DN\_2\_1/1N\_4\_SE <sup>(1)</sup>  
PCSFDV\_DN\_2\_1/1N\_4\_SE SERIES DIMENSIONAL TABLE <sup>(1)</sup>

DN		SE <sup>(*)</sup>	A±2	B1	B2	D	F		LF		H	H1	H2	H3	K	K1xK2	P
(mm)	(inch)						BSPP	NPT	BSPP	NPT							
8	1/4"	RS040	60	95	65	10	1/4" - 19	1/4" - 18	14	13	130	35	75	20	9	50x25	1/8"GC
10	3/8"	RS040	67	95	65	12	3/8" - 19	3/8" - 18	15	15	140	40	75	20	9	50x25	1/8"GC
15	1/2"	RS050	67	135	75	15	1/2" - 14	1/2" - 14	15	16	160	50	90	20	9	80x30	1/4"GC
20	3/4"	RS050	80	135	75	20	3/4" - 14	3/4" - 14	17	18	165	50	90	20	9	80x30	1/4"GC
25	1"	RS065	90	155	90	25	1" - 11	1" - 11 1/2	17	18	190	55	105	20	13	80x30	1/4"GC
32	1 1/4"	RS065	105	155	90	32	1 1/4" - 11	1 1/4" - 11 1/2	19	18	200	60	105	20	13	80x30	1/4"GC
40	1 1/2"	RS080	120	220	100	38	1 1/2" - 11	1 1/2" - 11 1/2	23	26	245	75	125	20	19	80x30	1/4"GC
50	2"	RS080	133	220	100	49	2" - 11	2" - 11 1/2	26	26	255	90	125	20	19	80x30	1/4"GC
65	2 1/2"	RS090	183	225	105	65	2 1/2" - 11	2 1/2" - 8	35	32	290	100	135	20	19	80x30	1/4"GC
80	3"	RS125	205	330	150	76	3" - 11	3" - 8	35	32	360	110	175	20	19	80x30	1/4"GC
100	4"	RS125	210	330	150	100	4" - 11	4" - 8	40	35	375	130	175	20	19	80x30	1/4"GC



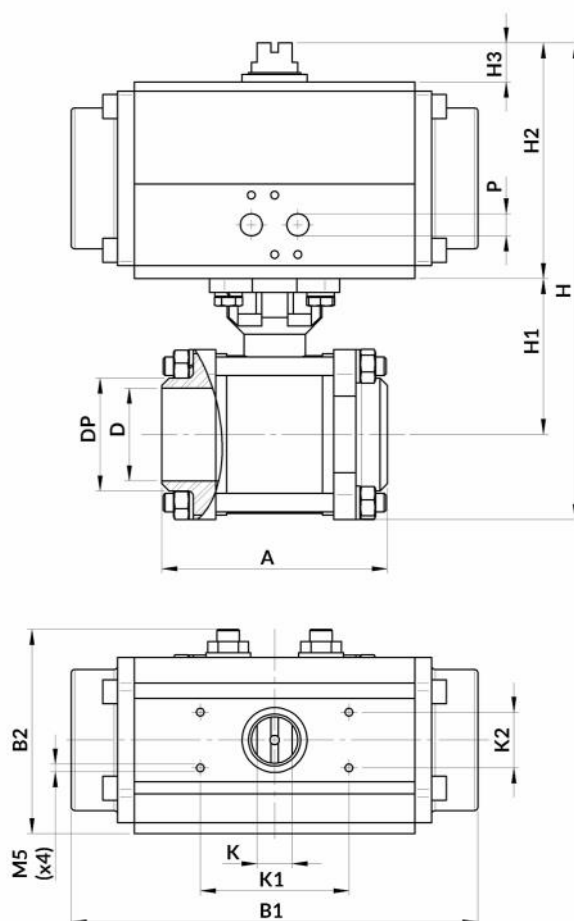
(\*) Accoppiamento attuatore pneumatico/valvola consigliati;  
(1): I dati dimensionali riportati sono indicativi e possono essere variati dal fornitore senza obbligo di preavviso

(\*) Recommended pneumatic actuator / valve coupling  
(1): Reported dimensions are only for reference and may be changed by the supplier without notice

**TABELLA DIMENSIONALE SERIE PCSFDV\_DN\_2\_2\_4\_SE <sup>(1)</sup>**  
**PCSFDV\_DN\_2\_2\_4\_SE SERIES DIMENSIONAL TABLE <sup>(1)</sup>**

DN	SE <sup>(*)</sup>	A±2	B1	B2	D	DT	LT	H	H1	H2	H3	K	K1xK2	P
(mm)	(inch)													
8	1/4"	RS040	65	95	65	10	14.2	10	145	50	75	20	9	50x25 1/8"GC
10	3/8"	RS040	67	95	65	12	17.8	10	140	40	75	20	9	50x25 1/8"GC
15	1/2"	RS050	67	135	75	15	21.2	10	160	50	90	20	9	80x30 1/4"GC
20	3/4"	RS050	80	135	75	20	27.2	12	165	50	90	20	9	80x30 1/4"GC
25	1"	RS065	90	155	90	25	34	12	190	55	105	20	13	80x30 1/4"GC
32	1 1/4"	RS065	105	155	90	32	42.5	12	200	60	105	20	13	80x30 1/4"GC
40	1 1/2"	RS080	120	220	100	38	49	12	245	75	125	20	19	80x30 1/4"GC
50	2"	RS080	133	220	100	50	61	16	265	90	125	20	19	80x30 1/4"GC
65	2 1/2"	RS090	183	225	105	64	76.5	18	290	100	135	20	19	80x30 1/4"GC
80	3"	RS125	205	330	150	78	89.5	23	360	110	175	20	19	80x30 1/4"GC





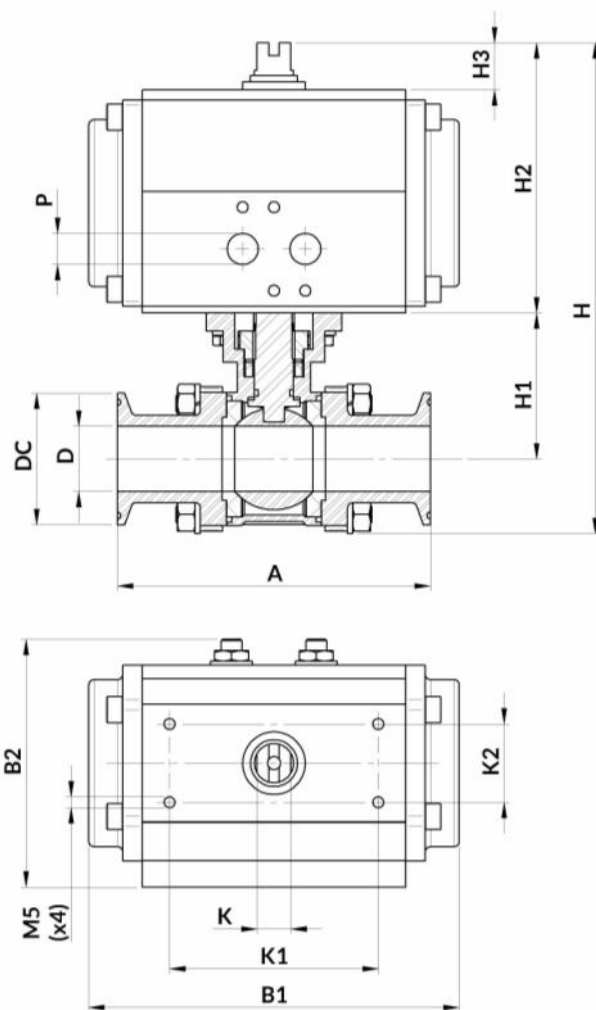
(\*) Accoppiamento attuatore pneumatico/valvola consigliati;  
(1): I dati dimensionali riportati sono indicativi e possono essere variati dal fornitore senza obbligo di preavviso

(\*) Recommended pneumatic actuator / valve coupling  
(1): Reported dimensions are only for reference and may be changed by the supplier without notice

TABELLA DIMENSIONALE SERIE PCSFDV\_DN\_2\_3\_4\_SE <sup>(1)</sup>

PCSFDV\_DN\_2\_3\_4\_SE SERIES DIMENSIONAL TABLE <sup>(1)</sup>

DN	SE <sup>(*)</sup>	A±2	B1	B2	D	DP	H	H1	H2	H3	K	K1xK2	P
(mm) (inch)													
8 1/4"	RS040	65	95	65	10	14	132	37	75	20	9	50x25	1/8"GC
10 3/8"	RS040	65	95	65	12	17.5	132	37	75	20	9	50x25	1/8"GC
15 1/2"	RS050	70	135	75	15	23	150	40	90	20	9	80x30	1/4"GC
20 3/4"	RS050	73	135	75	20	27.5	160	45	90	20	9	80x30	1/4"GC
25 1"	RS065	95	155	90	25	34	190	55	105	20	13	80x30	1/4"GC
32 1 1/4"	RS065	95	155	90	32	42.5	200	60	105	20	13	80x30	1/4"GC
40 1 1/2"	RS080	110	220	100	38	48.5	240	75	125	20	19	80x30	1/4"GC
50 2"	RS080	120	220	100	50	61	255	85	125	20	19	80x30	1/4"GC



(\*) Accoppiamento attuatore pneumatico/valvola consigliati;

(1): I dati dimensionali riportati sono indicativi e possono essere variati dal fornitore senza obbligo di preavviso

(2): Dimensione non standard per connessioni T/C ISO 2852

(\*) Recommended pneumatic actuator / valve coupling

(1): Reported dimensions are only for reference and may be changed by the supplier without notice

(2): Not standard dimension for ISO2852 T/C connection

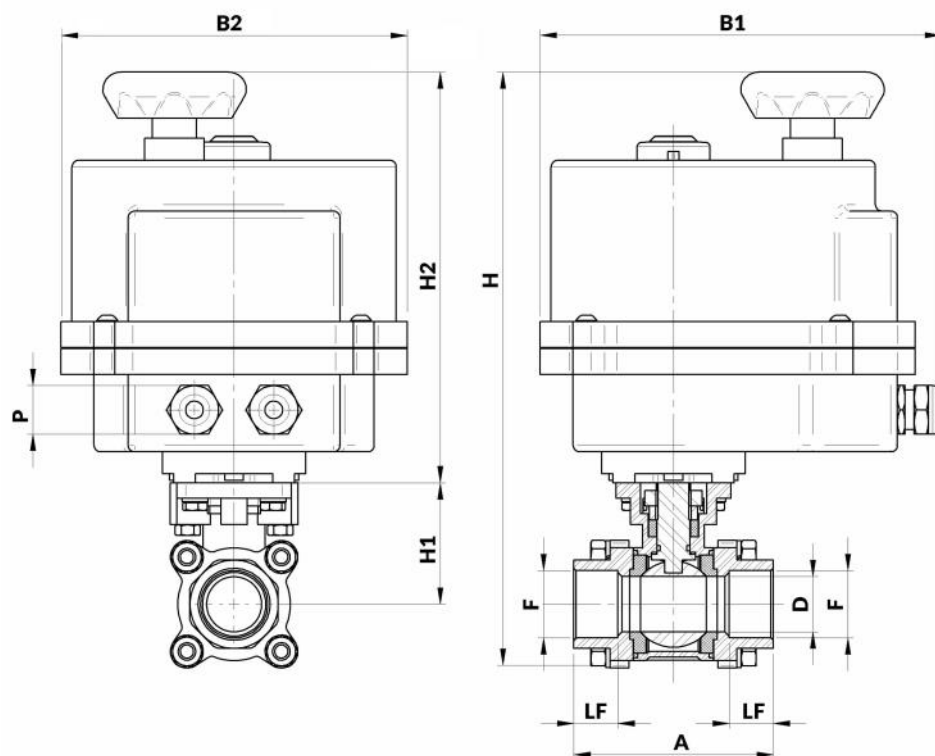
TABELLA DIMENSIONALE SERIE PCSFVDVY\_DN\_2\_10\_4\_SE <sup>(1)</sup>

PCSFVDVY\_DN\_2\_10\_4\_SE SERIES DIMENSIONAL TABLE <sup>(1)</sup>

DN		SE <sup>(*)</sup>	A±2	B1	B2	D	DC	H	H1	H2	H3	K	K1xK2	P
(mm)	(inch)													
15	1/2"	RS050	70	135	75	15	50.5 <sup>(2)</sup>	145	40	90	20	9	80x30	1/4"GC
20	3/4"	RS050	80	135	75	20	50.5	155	45	90	20	9	80x30	1/4"GC
25	1"	RS065	90	155	90	25	50.5	185	55	105	20	13	80x30	1/4"GC
32	1 1/4"	RS065	105	155	90	32	50.5	195	60	105	20	13	80x30	1/4"GC
40	1 1/2"	RS080	120	220	100	38	64	235	70	125	20	19	80x30	1/4"GC
50	2"	RS080	135	220	100	49	77.5	245	80	125	20	19	80x30	1/4"GC

PCSFDV\_DN\_2\_1/1N\_4\_EL - CONNESSIONI FILETTATE FF GAS  
ISO228 / NPT

PCSFDV\_DN\_2\_1/1N\_4\_EL - GAS ISO228 / NPT FEMALE THREAD ENDS



(\*) Accoppiamento attuatore pneumatico/valvola consigliati;  
(1): I dati dimensionali riportati sono indicativi e possono essere variati dal fornitore senza obbligo di preavviso

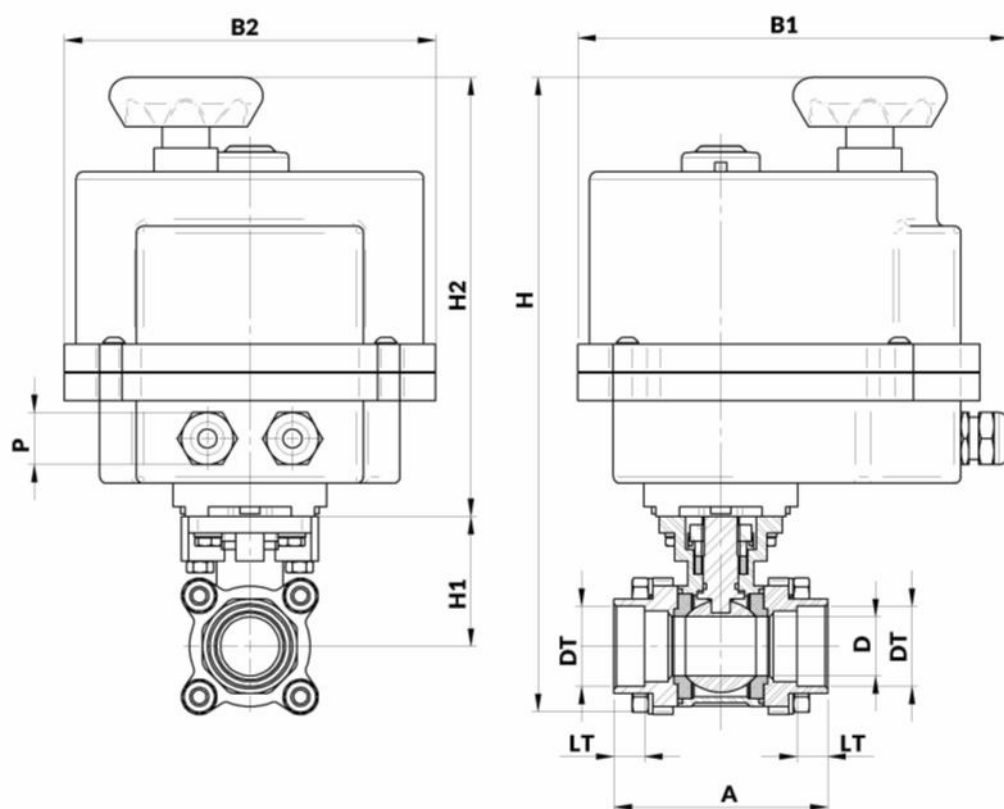
(\*) Recommended pneumatic actuator / valve coupling  
(1): Reported dimensions are only for reference and may be changed by the supplier without notice

TABELLA DIMENSIONALE SERIE PCSFDV\_DN\_2\_1/1N\_4\_EL <sup>(1)</sup>  
PCSFDV\_DN\_2\_1/1N\_4\_EL SERIES DIMENSIONAL TABLE <sup>(1)</sup>

DN		EL (*)	A±2	B1	B2	D	F		LF		H	H1	H2	P
(mm)	(inch)						BSPP	NPT	BSPP	NPT				
8	1/4"	PCVB015	60	163	123	10	1/4" - 19	1/4" - 18	14	13	195	35	140	PG11 (x2)
10	3/8"	PCVB015	67	163	123	12	3/8" - 19	3/8" - 18	15	15	200	40	140	PG11 (x2)
15	1/2"	PCVB015	67	163	123	15	1/2" - 14	1/2" - 14	15	16	210	50	140	PG11 (x2)
20	3/4"	PCVB015	80	163	123	20	3/4" - 14	3/4" - 14	17	18	215	50	140	PG11 (x2)
25	1"	PCVB030	90	190	160	25	1" - 11	1" - 11 1/2	17	18	275	55	190	PG11 (x2)
32	1 1/4"	PCVB030	105	190	160	32	1 1/4" - 11	1 1/4" - 11 1/2	19	18	285	60	190	PG11 (x2)
40	1 1/2"	PCVB060	120	215	185	38	1 1/2" - 11	1 1/2" - 11 1/2	23	26	335	75	215	PG11 (x2)
50	2"	PCVB060	133	215	185	49	2" - 11	2" - 11 1/2	26	26	345	90	215	PG11 (x2)
65	2 1/2"	PCVB110	183	240	210	65	2 1/2" - 11	2 1/2" - 8	35	32	385	100	230	PG11 (x2)
80	3"	PCVB110	205	240	210	76	3" - 11	3" - 8	35	32	415	110	230	PG11 (x2)
100	4"	PCVB190	210	240	210	100	4" - 11	4" - 8	40	35	430	130	230	PG11 (x2)

PCSFDV\_DN\_2\_2\_4\_EL - CONNESSIONI A SILDARE DI TASCA

PCSFDV\_DN\_2\_2\_4\_EL - SOCKET WELD ENDS



(\*) Accoppiamento attuatore pneumatico/valvola consigliati;  
(1): I dati dimensionali riportati sono indicativi e possono essere variati dal fornitore senza obbligo di preavviso

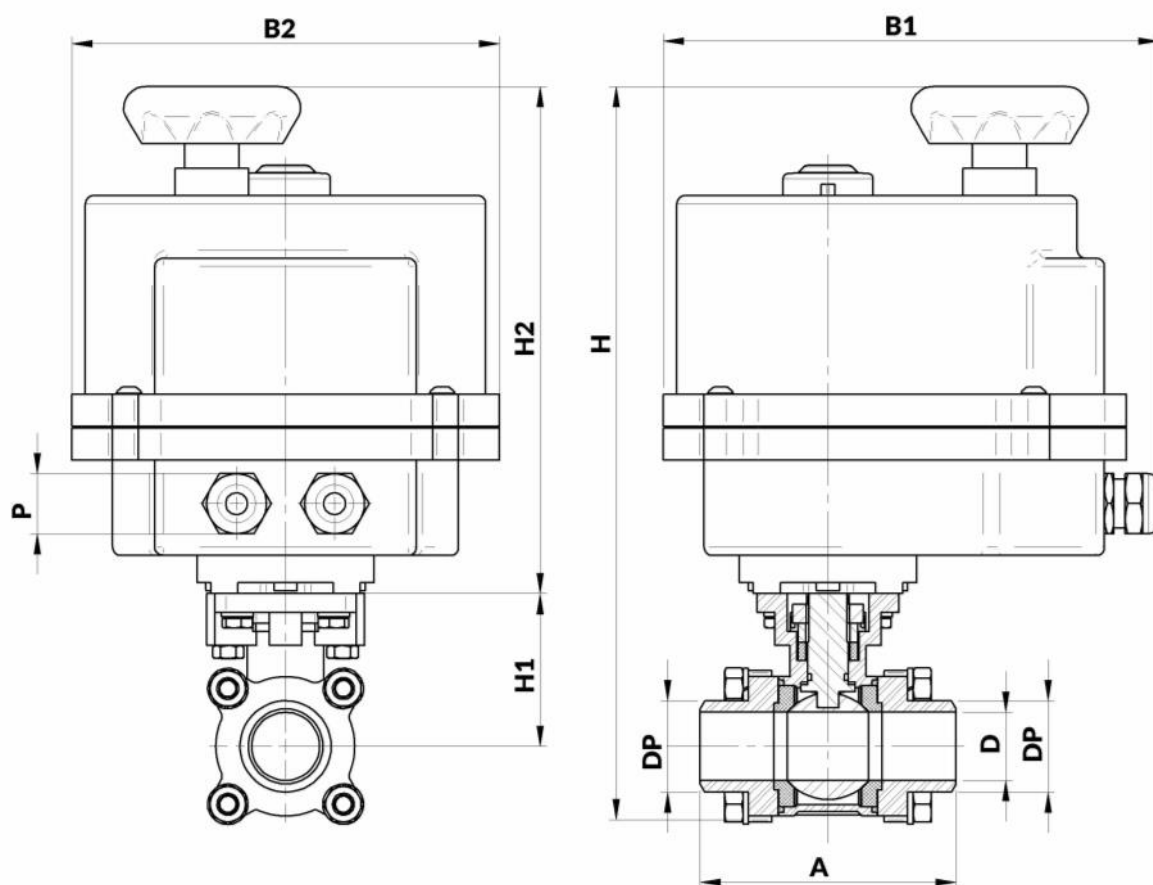
(\*) Recommended pneumatic actuator / valve coupling  
(1): Reported dimensions are only for reference and may be changed by the supplier without notice

TABELLA DIMENSIONALE SERIE PCSFDV\_DN\_2\_2\_4\_EL <sup>(1)</sup>  
PCSFDV\_DN\_2\_2\_4\_EL SERIES DIMENSIONAL TABLE <sup>(1)</sup>

DN		EL (*)	A±2	B1	B2	D	DT	LT	H	H1	H2	P
(mm)	(inch)											
8	1/4"	PCVB015	65	163	123	10	14.2	10	210	50	140	PG11 (x2)
10	3/8"	PCVB015	67	163	123	12	17.8	10	205	40	140	PG11 (x2)
15	1/2"	PCVB015	67	163	123	15	21.2	10	210	50	140	PG11 (x2)
20	3/4"	PCVB015	80	163	123	20	27.2	12	215	50	140	PG11 (x2)
25	1"	PCVB030	90	190	160	25	34	12	275	55	190	PG11 (x2)
32	1 1/4"	PCVB030	105	190	160	32	42.5	12	285	60	190	PG11 (x2)
40	1 1/2"	PCVB060	120	215	185	38	49	12	335	75	215	PG11 (x2)
50	2"	PCVB060	133	215	185	49	61	16	355	90	215	PG11 (x2)
65	2 1/2"	PCVB110	183	240	210	65	76.5	18	385	100	230	PG11 (x2)
80	3"	PCVB110	205	240	210	76	89.5	23	415	110	230	PG11 (x2)

PCSFDV\_DN\_2\_3\_4\_EL - CONNESSIONI A SALDARE DI TESTA

PCSFDV\_DN\_2\_3\_4\_EL - BUTTWELD ENDS



(\*) Accoppiamento attuatore pneumatico/valvola consigliati;

(1): I dati dimensionali riportati sono indicativi e possono essere variati dal fornitore senza obbligo di preavviso

(\*) Recommended pneumatic actuator / valve coupling

(1): Reported dimensions are only for reference and may be changed by the supplier without notice

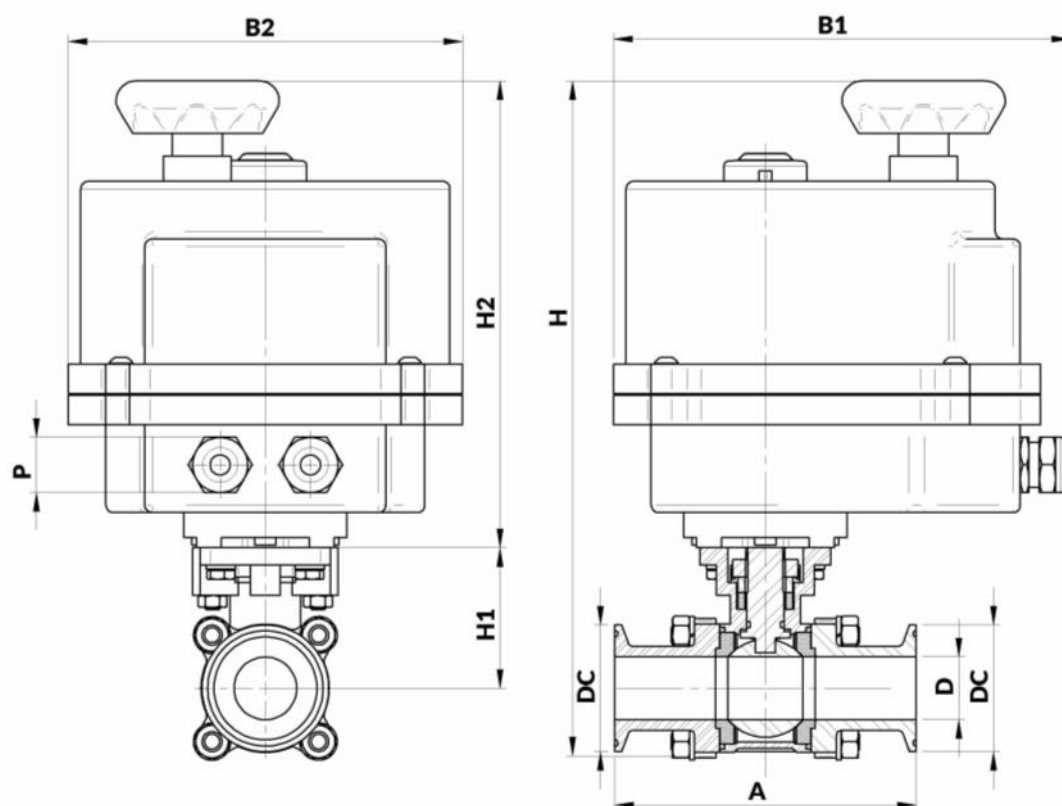
TABELLA DIMENSIONALE SERIE PCSFDV\_DN\_2\_3\_4\_EL <sup>(1)</sup>

PCSFDV\_DN\_2\_3\_4\_EL SERIES DIMENSIONAL TABLE <sup>(1)</sup>

DN		EL (*)	A±2	B1	B2	D	DP	H	H1	H2	P
(mm)	(inch)										
8	1/4"	PCVB015	65	163	123	10	14	197	37	140	PG11 (x2)
10	3/8"	PCVB015	65	163	123	12	17.5	197	37	140	PG11 (x2)
15	1/2"	PCVB015	70	163	123	15	23	200	40	140	PG11 (x2)
20	3/4"	PCVB015	73	163	123	20	27.5	210	45	140	PG11 (x2)
25	1"	PCVB030	95	190	160	25	34	275	55	190	PG11 (x2)
32	1 1/4"	PCVB030	95	190	160	32	42.5	285	60	190	PG11 (x2)
40	1 1/2"	PCVB060	110	215	185	38	48.5	330	75	215	PG11 (x2)
50	2"	PCVB060	120	215	185	50	61	345	85	215	PG11 (x2)

PCSFVDVY\_DN\_2\_10\_4\_EL - CONNESSIONI CLAMP ISO 2852

PCSFVDVY\_DN\_2\_10\_4\_EL - ISO2852 CLAMP ENDS



(\*) Accoppiamento attuatore pneumatico/valvola consigliati;  
(1): I dati dimensionali riportati sono indicativi e possono essere variati dal fornitore senza obbligo di preavviso  
(2): Dimensione non standard per connessioni T/C ISO 2852

(\*) Recommended pneumatic actuator / valve coupling  
(1): Reported dimensions are only for reference and may be changed by the supplier without notice  
(2): Not standard dimension for ISO2852 T/C connection

TABELLA DIMENSIONALE SERIE PCSFVDVY\_DN\_2\_10\_4\_EL <sup>(1)</sup>  
PCSFVDVY\_DN\_2\_10\_4\_EL SERIES DIMENSIONAL TABLE <sup>(1)</sup>

DN		EL <sup>(*)</sup>	A±2	B1	B2	D	DC	H	H1	H2	P
(mm)	(inch)										
15	1/2"	PCVB015	70	163	123	15	50.5 <sup>(2)</sup>	195	40	140	PG11 (x2)
20	3/4"	PCVB015	80	163	123	20	50.5	205	45	140	PG11 (x2)
25	1"	PCVB030	90	190	160	25	50.5	270	55	190	PG11 (x2)
32	1 1/4"	PCVB030	105	190	160	32	50.5	280	60	190	PG11 (x2)
40	1 1/2"	PCVB060	120	215	185	38	64	325	70	215	PG11 (x2)
50	2"	PCVB060	135	215	185	49	77.5	335	80	215	PG11 (x2)